



**8 Hamilton Crescent Wangaratta VIC**

3  1 

On offer is a Property in excellent condition ready for a new owner to move in and create many more new memories.

Whether you're an owner occupier or an investor, this weatherboard home is for you. Built on an approximately 556 square meter (Approx.) block, the property is situated not far from Bunnings, and is a 5-minute drive from the heart of Wangaratta with Tone Road take away within walking distance.

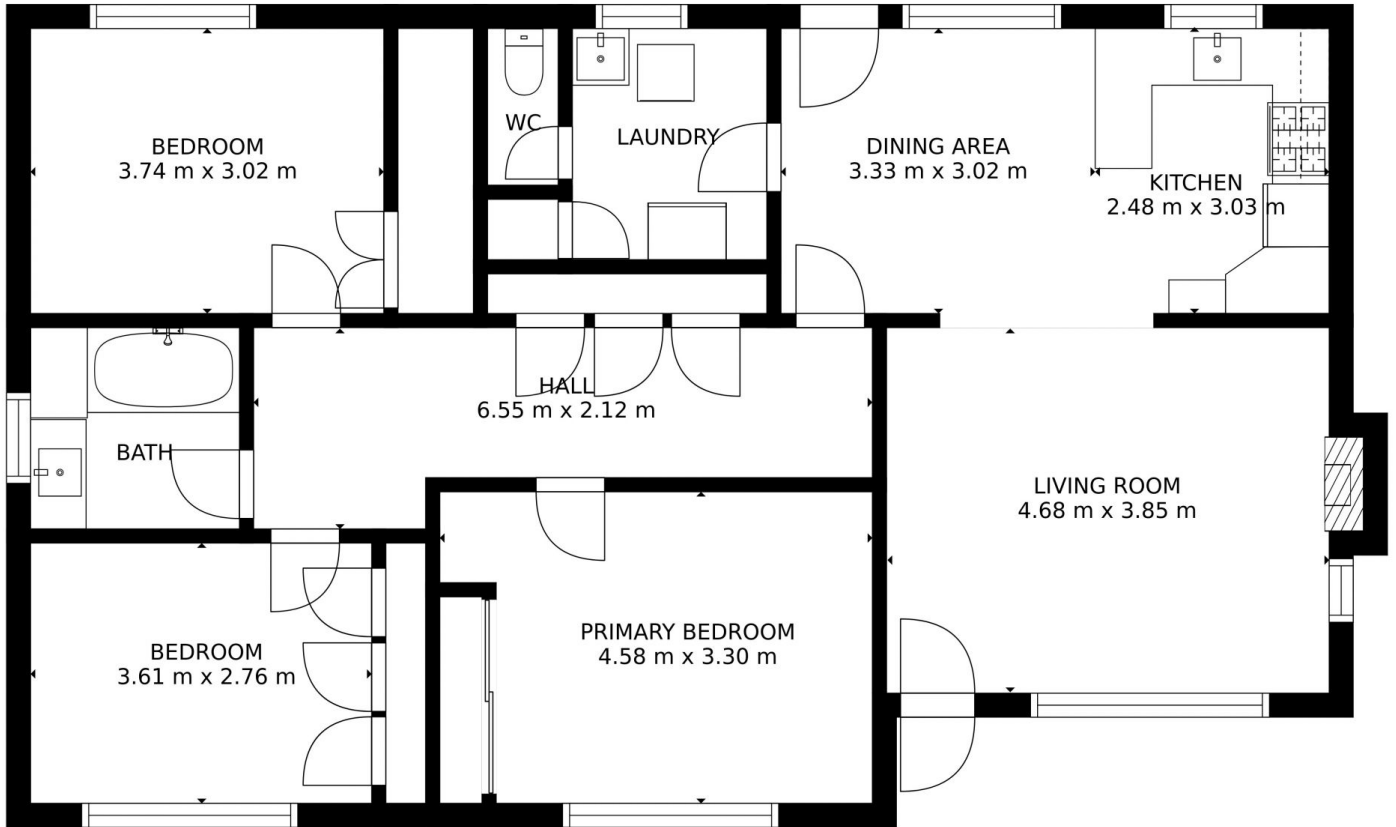
Some close Schools include Yarrunga Primary and Our Ladies both under 3 kilometers. As well as, West End Primary School and Appin Park Primary School.

This property consists of 3 bedrooms, 1 bathroom, good size living room and Lounge. The property has had a update with Floating Floorboards and the house is freshly

**Price** : \$400,000  
**Land Size** : 556 sqm  
**View** : <https://www.northeastre.com.au/sale/vic/northeastern/wangaratta/residential/house/6659962>



**Mark Dillow**  
03 5721 5458



GROSS INTERNAL AREA  
FLOOR 1: 108 m<sup>2</sup>  
TOTAL: 108 m<sup>2</sup>

SIZES AND DIMENSIONS ARE APPROXIMATE, ACTUAL MAY VARY.