



307 Banksdale Road Greta VIC

3 1 4

If you are looking for a tree change rural lifestyle then this property is a must view. This property will suit family looking for a rural lifestyle, Investor as an Airbnb rental or someone who needs to downsize from a farm. This property is also ideal for someone who wants horses or some cattle and sheep on a small basis.

Price : \$ 665,000
Land Size : 8.5 Acres
View : <https://www.northeastre.com.au/sale/vic/north-eastern/greta/residential/house/6688631>

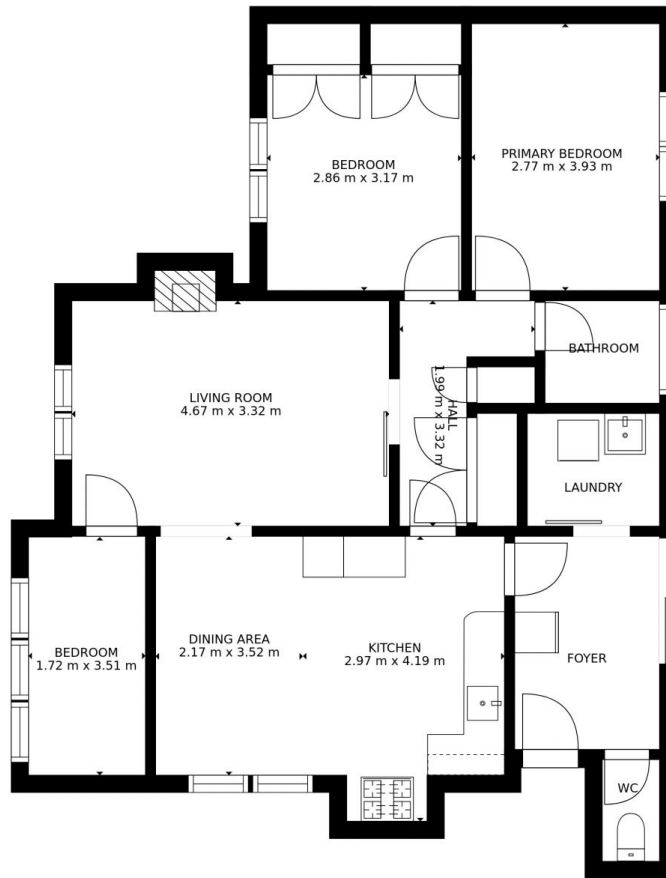
This property is situated, 21 minutes from Wangaratta, 14 minutes from Milawa, 31 minutes from Benalla, 1 hour and 3 minutes from Bright, 2 Hours and 37 minutes from Melbourne, 54 minutes from Albury Wodonga.

This 3 bedroom home situated on 8.5Ac (3.28Ha) was built in 1958 and consists of the following;

* Split system heating & cooling, wood heater & 4kw solar system



Mark Dillow
 03 5721 5458



GROSS INTERNAL AREA

FLOOR 1: 88 m²

TOTAL: 88 m²

SIZES AND DIMENSIONS ARE APPROXIMATE, ACTUAL MAY VARY.